

## HOW DID PEOPLE OF DIFFERENT CULTURES INTERACT 2,000 YEARS AGO?



Two thousand years ago the Rhine was a frontier, a trade route and a speedy way of transporting goods. People living along this “water boundary”, or Limes, spent their time exploring, building and cultivating crops. Sometimes they fought battles. However, life was mostly peaceful and there was frequent contact between the Roman and Germanic populations. So, how did this peaceful coexistence work?

“Rome’s Flowing Frontiers” offers a unique opportunity to discover what Roman life was like in North Rhine-Westphalia through spectacular new finds, detailed reconstructions and special events. Be a part of it!



## 5 DIFFERENT VENUES 5 DIFFERENT PERSPECTIVES

DETMOLD ●



## ROMS FLIESSENDE GRENZEN

The participating museums are all offering a wide range of guided tours, events and workshops to enhance your learning experience. Learn more at [www.roemer.nrw](http://www.roemer.nrw)

You can download this flyer or order print copies (item no. S-335) at: [www.mhkgb.nrw/broschueren](http://www.mhkgb.nrw/broschueren)

Ministerium für Heimat, Kommunales,  
Bau und Gleichstellung  
des Landes Nordrhein-Westfalen



LANDES  
VERBAND  
LIPPE

LWL  
Für die Menschen.  
Für Westfalen-Lippe.

LVR  
Qualität für Menschen

Stadt Köln

**Photo credits:** Cover image: LWL-Römermuseum Haltern am See / PrahL-Recke; Gold coin pendant with bust of Emperor Valentinian I © Lippisches Landesmuseum / J. Ihle; Winged goddess Victoria © LVR-ZMB / St. Arendt; River god Rhenus © LVR- LMBonn / J. Vogel; Roman dagger © LWL / E. Müsch; Portrait bust of Emperor Domitian. © RGM / S. Fuis; LWL / Faber Courtial (still image) and LWL / J. Mühlenbrock (Roman legionaries with marching pack); LVR-APX / Axel Thünker DGPh

Ministerium für Heimat, Kommunales,  
Bau und Gleichstellung  
des Landes Nordrhein-Westfalen



## ROMS FLIESSENDE GRENZEN



## DISCOVER THE ROMANS!

Archaeological Exhibition  
North Rhine-Westphalia

[www.roemer.nrw](http://www.roemer.nrw)

## 5 EXHIBITION VENUES

### 5 PERSPECTIVES

#### Lippisches Landesmuseum Detmold Border crossings along the Limes

Who were the Germanic peoples? Were they an organised group or a collection of tribes? What did they eat? How did they live? What changed when the Romans constructed their frontier fortifications, or Limes, along the Rhine? Explore the impressive finds at the Lippischen Landesmuseum and discover more about the Germanic peoples' relations with the Roman populations living on the other side of the frontier.



Gold coin pendant  
with bust of Emperor  
Valentinian I



Winged goddess  
Victoria

#### LVR-Archäologischer Park Xanten / LVR-RömerMuseum The Lower Rhine Limes

The most recent archaeological finds unearthed at the sites of Roman forts along the Lower Rhine are a reminder of just how important the north-west frontier was for the Roman Empire. Explore replicas of Roman ships, have a look inside a rebuilt Limes structure and use the interactive displays to learn more about life as a legionary. What was daily life like for people living on either side of the Rhine under the influence of the Roman army?

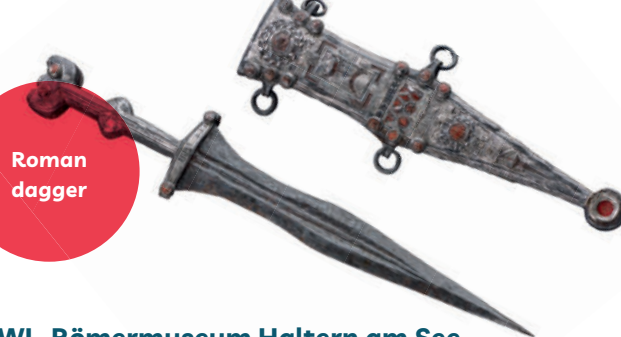
#### LVR-LandesMuseum Bonn Life along the Limes

The vibrant and diverse society of the Rhineland was already a melting pot of cultures 2,000 years ago. What interactions took place between the people living in and outside the towns, and on either side of the Rhine? How did the soldiers in the fortresses and the people in the towns and smaller settlements organise their work and domestic lives? Fascinating finds and an interactive model of a Limes structure invite you to step back in time and discover more about life along the Lower Germanic Limes.

River god  
Rhenus



Roman  
dagger



#### LWL-Römermuseum Haltern am See Rome in Westphalia 2.0

In the early 1st century AD Roman legionaries attempted to expand the Empire eastwards. They constructed massive military fortifications along the banks of the Lippe – but met with so much resistance from the Germanic tribes that they had to withdraw to the Rhine. Haltern offers a unique opportunity to explore Roman Westphalia through spectacular new finds, a detailed reconstruction of a guard-house and a new escape room.

#### Cologne Rome on the Rhine

The stunning remains uncovered in Cologne, including imperial palaces, temples, ancient streets and public squares, reflect the city's importance as the capital of the Roman province of Lower Germany. People and goods came to the thriving city from all over Ancient Rome while ceramics and fine glass objects from Cologne were sold throughout the Empire. Enjoy exploring the display of impressive finds and digital reconstructions to discover more about life in "Rome on the Rhine".

Portrait bust  
of Emperor  
Domitian



Learn more at  
[www.roemer.nrw](http://www.roemer.nrw)